

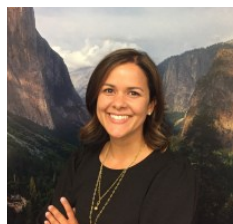
## Meet the CalCAN Summit 2022 Speakers



### Adam Livingston

Adam Livingston is the Director of Planning and Policy at Sequoia Riverlands Trust (SRT) and Coordinator of the Southern Sierra Partnership. Widely recognized as a leading voice on land use and conservation in the Sierra

Nevada and San Joaquin Valley, Adam has built cross-sector coalitions to support compact growth in the city- and county-level general plan updates, regional transportation plans, and other contexts. He has served on boards and advisory groups focused on policy development and implementation and has been chair or co-chair of leadership bodies ranging from the California Economic Summit's Ecosystem Services Team to the Tulare Regional Transportation Plan Roundtable. He also coordinated SRT's successful applications for Land Trust Alliance accreditation and accreditation renewal. Adam is the author of Sustainable Communities Strategies and Conservation: Results from the First Round and Policy Recommendations for Future Rounds and co-author of Ecosystem Services and California's Working Landscapes: Market Mechanisms to Revitalize Rural Economies.



### Amanda Hansen

Amanda Hansen serves as Deputy Secretary for Climate Change at the California Natural Resources Agency. In 2012, Amanda served as deputy associate director for policy outreach at the White House Council on Environmental Quality. She was chief of staff to the chairman of

the 2010-2011 round of United Nations climate change negotiations, and a foreign affairs officer at the U.S. Department of State's Bureau of Oceans and International Environmental and Scientific Affairs from 2005 to 2009. Amanda earned her Master's of Public Policy in environmental policy from the University of Maryland and a Bachelor's degree in the interdisciplinary Science in Society program at Wesleyan University. She lives in El Dorado Hills, California with her husband, children, and dog where they enjoy all things outdoors.



### Alondra Santiago

Alondra Santiago is an associate researcher with the California Institute for Rural Studies from Pixley, California. She is an Aggie Alum and the daughter of immigrant farmworkers. Growing up in rural California, she witnessed her community and loved ones struggle due

to a lack of resources and low wages. This fueled her passion to aid and fight for her community. Alondra assisted with the California COVID-19 Farmworker Study that shed light on the lived realities of farmworkers through the pandemic. She has spent this past year working on an in-depth analysis of policies passed early in the pandemic affecting farmworkers that experienced hardship due to COVID-19.



### Andy Lyons

Andy Lyons is the Program Coordinator for the Informatics and GIS Statewide Program at UC ANR. In this capacity, he supports a wide range of research projects in agriculture and natural resources using GIS, spatial analysis, remote sensing, drone mapping, developing online decision support tools, data management, and developing open-

source research software. His graduate work at UC Berkeley focused on analyzing spatiotemporal patterns in animal movement, population modeling, remote sensing, food security, community-based conservation, and the political economy of international conservation programs.



### Amalie Lipstreu

Amalie has a bachelors from Hiram College and a Master's Degree in Environmental Policy from Kent State University as well as more than 25 years of public and social service experience. She has worked in land use around

farmland preservation and innovative land use tools and conducted research and advocacy that led to the development of the Ohio Food Policy Advisory Council which she managed along with the Office of Sustainable Agriculture at the Ohio Department of Agriculture. She now directs the policy program for the Ohio Ecological Food and Farm Association focused on sustainable agriculture policy at the state and federal levels.



### Andy Naja-Riese, MSPH

Andy Naja-Riese (he/him) brings more than 17 years of experience in community food systems, policy, and nutrition education with the USDA, CDC, and community grassroots work. He is CEO of the Agricultural Institute of Marin (AIM), a Bay Area 501c3 non-profit that works to educate, inspire, and connect communities,

responsible farmers, and producers as part of a healthy, Earth-friendly, equitable local and regional food system. At AIM, he is leading an ambitious effort to build The Center for Food and Agriculture, one of the world's first closed-loop, zero-waste farmers markets and educational centers. Andy is currently the Co-Chair of the Marin County HEAL Collaborative, serves on the California Farm to School Working Group, is on the Steering Committee of both the Marin Carbon Project and the Marin Community Health Improvement Partnership, and is engaged in state-level policy through the California Food & Farming Network and Food & Farm Resilience Coalition.



## Anna Larson

Anna works on CalCAN's policy team to advocate for resources to help farmers become more climate resilient. Prior to CalCAN, she advocated for sustainable and equitable food systems in the Midwest, Northeast, and California.

---



## Arohi Sharma

Arohi Sharma advocates for policies that promote regenerative agriculture to mitigate climate change, protect soil health, conserve, and reduce water use, and restore biodiversity. Before joining NRDC, Sharma was in graduate school, where she researched how to incentivize

multi-stakeholder partnerships to help mitigate climate change and worked for the Ethiopian Government to help craft the nation's first sustainable agricultural development strategy. Prior to graduate school, Sharma served as a legislative staffer on Capitol Hill for the U.S. Senate Agriculture Committee and Senator Cory Booker. She holds a bachelor's degree in political science from the University of California, San Diego, and a master's degree in public policy from the Harvard Kennedy School of Government. In 2020, Sharma was awarded the John E. Bryson fellowship for her work on water and agriculture.

---



## Betsy Karle

Betsy Karle is a county-based Cooperative Extension Dairy Farm Advisor and County Director within the University of California Division of Agriculture & Natural Resources (UC ANR). In the position since 2014, Karle's research focuses on a wide range of dairy issues with particular emphasis on

environmental stewardship and calf health and management. As County Director, Karle is responsible for oversight of all local programs within the UCCE Glenn County office. Prior to this assignment, she held a variety of staff researcher positions at UC Davis and UC ANR, starting at the beginning of her undergraduate career. Karle obtained her B.S. in Agriculture Systems and Environment in 1999 and her M.S. in Agro-Ecology in 2003, both from U.C. Davis.

---



## Brian Shobe

Brian began his agricultural career on his grandparents' farm in North Dakota and has been involved with sustainable agriculture and community food security work ever since. Prior to joining CalCAN in 2016, he served as the Program Coordinator and Government Resources Advisor at the Farmer Veteran Coalition,

where he advised beginning farmers and advocated for their policy priorities. Brian received a yearlong Emerson National Hunger Fellowship, during which time he worked with the Community Food Bank of Southern Arizona and the National

Sustainable Agriculture Coalition (NSAC) in Washington, DC. Brian has a bachelor's degree in Sociology from Beloit College and farming experience in three states.

---



## Brock Dolman

Brock Dolman co-founded the Occidental Arts & Ecology Center in 1994 where he co-directs the WATER Institute. He is a wildlife biologist & watershed ecologist who has been actively promoting Bringing Back Beaver in California since the early

2000s. He was given Salmonid Restoration Federation's coveted Golden Pipe Award in 2012: "...for his leading role as a proponent of "working with beavers" to restore native habitat".

---



## Caity Peterson

Caity is an agroecologist whose research spans climate-smart agriculture, soil health, diversified cropping systems, agroecosystem resilience, and multi-benefit agricultural landscapes. At PPIC, she studies land use changes and dryland and water-limited agricultural systems as

they relate to water scarcity and sustainable groundwater goals, with a focus on the San Joaquin Valley of California. She holds a Ph.D. in ecology and an MS in international agricultural development from the University of California, Davis.

---



## Cathy Day, PhD

Cathy Day is the Climate Policy Coordinator for the National Sustainable Agriculture Coalition. She leads work on climate change in agricultural conservation and research policy advocacy. She

previously taught in the Environmental Studies and Sustainable Food Systems programs at Stetson University, where she also co-directed the Sustainable Farming Fund. She holds a Ph.D. in Geography from the University of Wisconsin-Madison. Her research has focused on how farmers transform their farming systems in the face of climate, market, and social change. Her past also includes time as a Peace Corps volunteer in Niger and a public-school science teacher.

---



## Cesar Lara

Cesar Lara was raised in Monterey County California; he's currently the executive director of the Monterey Bay Central Labor Council. The Labor Council is the local body of the AFL-CIO. They serve as a coalition of the Labor Community in Monterey and Santa Cruz Counties. Over 80 unions

are affiliated with the MBCLC, representing more than 37,000 union members and their families. The mission of the MBCLC is to improve the lives of workers, their families, and our community -



to help bring economic justice to the workplace and social justice to the Monterey Bay Area. Cesar Lara is very active on several statewide and local boards, besides his role at the Labor Council; Cesar is also the Director of Policy and Programs for MILPA Collective, MILPA is a community-based organization that is cultivating change-makers for the next seven generations by improving the health and well-being of the most impacted communities.

---



## Christine Gemperle

Christine Gemperle has been farming almonds since 1998 although she was raised in an almond and poultry farming family in the Central Valley of California. Her educational background is in biology (BA, UC Santa Cruz) and fisheries (MS, Utah State University) with the scientific process and research has been the main attractant. Currently, she and her

brother, Erich, manage and operate 135 acres with no employees placing them in the unique position of knowing every facet of their operation, from the mundane to the technologically advanced. Christine is a member of the Blue Diamond Growers Cooperative where she has served as a grower liaison. She also serves on the board of directors for the Almond Board of California, additionally participating in Biomass and the Nutritional Research Committees. She recently joined Project Apis m. Board of Directors and is a co-founder of the newly formed Women in Almonds group.

---



## Chris Brown

A native of Berkeley and graduate of Cal, Chris started his career in the investment field in San Francisco and later continued his studies at UCLA. Ironically, earning an MBA coincided with an abrupt career change that confronted both his ambivalence with corporate work and his desire to explore the world. In the midst

of the tech boom of the late 90s, he elected to do a volunteer stint consulting for small businesses in Ukraine. This led to other economic development assignments in Romania, Georgia, and Montenegro with short stints in a dozen other countries over 12 years. Living and working in the developing world sparked awareness of the vital role agriculture plays in the livelihoods of the poor all over the world. It wasn't until he returned home to California to a job at ALBA, that he realized this was true so close to home.

---



## Cynthia Daley PhD

Dr. Cynthia Daley is a professor at the College of Agriculture at California State University, Chico, serves as the Rawlins Endowed Professor for Environmental Literacy, and the Director for the Center for Regenerative Agriculture and Resilient Systems (CRARS). Cindy is originally from Illinois, where her family has been actively

engaged in farming for more than four generations. She completed her undergraduate degree at the University of Illinois, and her doctorate at the University of California, Davis. She joined the College of Agriculture faculty in 1997 and founded the Organic Dairy Education & Research Program in 2006. Daley went on to co-create the Regenerative Agriculture Initiative in 2016 and guided this program to Center status in May 2019. CRARS is a consortium of interdisciplinary faculty and farmers who recognize the ecological benefits of regenerative farming practices including water conservation, soil fertility, and carbon sequestration.

---



## Clint McKay

Clint and his wife Lucy live in Forestville, California along with their three daughters: Josephine, Mary, and Laura. They have been blessed with four grandchildren, Pearl, Sally, Angeline, and Luke. Clint was brought up in the traditional ways of his

people. His father and other relatives told stories of "early days" and taught him to respect their culture. While living on Dry Creek Rancheria next to his great-aunt, Laura Somersal, Clint became interested in weaving. Through years of patient guidance, Laura taught him the traditions of Pomo basket weaving. Clint was fortunate to also receive guidance from another of his great-aunts, Mabel McKay. In addition to weaving, Laura taught Clint the Dry Creek Language, use of Native plants, and how to carry on his people's reciprocal relationship with their natural world. Clint holds a bachelor's degree in anthropology and a master's degree in Indigenous Education.

---



## Dan Macon

Dan is the UCCE livestock and natural resources advisor for Placer, Nevada, Sutter, and Yuba Counties and county director for Placer and Nevada Counties. His priorities focus on climate resilience in rangeland agriculture, livestock-predator

coexistence, targeted grazing, and ranch business viability. Dan also provides administrative oversight and leadership for cooperative extension in Placer and Nevada Counties. Previously, he was an associate specialist in rangeland science /management at UC Davis, and beef cattle herdsman at the UC Sierra Foothill Research and Extension Center. He was also the founding executive director of the California Rangeland Trust. Dan is a partner at Flying Mule Sheep Company in Auburn, California. He holds a master's in integrated resource management from Colorado State University and a bachelor's in agricultural and managerial economics from UC Davis. He is a past president of the California Wool Growers Association and the California-Pacific Section of the Society for Range Management.

---



## Daniele Zaccaria

Daniele Zaccaria is an Associate Professor and Agricultural Water Management Specialist in Cooperative Extension at the Department of Land, Air, and Water Resources of the University of California, Davis. His expertise and current work focus on irrigation

management under limited and impaired water supply, determination of crop evapotranspiration and water productivity, adaptation and mitigation to drought and drought preparedness, as well as on design, performance analysis, and modernization of irrigation systems across the farm, district and scheme scales, and on developing viable agricultural water management solutions to improve resource efficiency in irrigated agriculture.

---



## Devon Hamilton

Devon is a food justice advocate, with a deeply intersectional background in community organizing, sustainable agriculture, youth education, and food services. Originally from Leimert Park Los Angeles, he started his journey in

agriculture in Wisconsin, where he spent 8 years between college and work. During his time in the Midwest, he worked as Michael Fields' Associate Policy Director, served on 3 organizational boards, and co-founded the group TradeRoots Culinary Coalition, among other work. Devon is also the founder of Grillin' for The People (G4TP), a barbecue and gardening community-centered business, and serves as a cook at Post & Beam LA. He received his BS in Landscape and Environmental Studies from the University of Wisconsin Madison, with a focus on food system issues.

---



## Dave Runsten

David Runsten is part of the Policy team at the Community Alliance with Family Farmers (CAFF) in Davis, where he has attempted to represent California's small farmers for the past 16 years. He is currently focused on SGMA and water policy. He was the Associate Director of the North American

Integration and Development Center at UCLA from 1995 to 2006, where he worked on migration and small farm issues in Mexico. He earlier spent seven years as Research Director of the California Institute for Rural Studies in Davis, where he conducted a series of surveys in California and Mexico on migration and the labor conditions of California farm workers. He studied economics at Stanford University and Agricultural and Resource Economics at the University of California at Berkeley.

---



## Ellee Igoe

Ellee Igoe is the co-founder of Solidarity Farm in Pauma Valley, California, and a co-founder of Foodshed Small Farm Distro and Resource Hub. Her farm was awarded Climate Smart Farm of the Year in 2020 by the California Alliance with Family Farms and she serves as co-director of Carbon Sink Farms, a regional advocacy group that works to integrate carbon farming into local public policy. Before her move into

commercial farming, Ellee served as National Technical Advisor for Food and Agriculture at the International Rescue Committee and did a stint at Wholesome Wave Foundation where she helped scale up Gus-NIP and Fruit and Vegetable Prescription programs.

---



## David Morell, PhD

Former Executive, USEPA in both DC and SF; university teaching at Princeton, Berkeley, and others; retired CEO, a global consultancy, directing Sonoma Ecology Center's climate action programs focused on biochar.

---



## Hannah Tikalsky

Hannah Tikalsky has over a decade of experience leading complex public-benefit projects, first in community health within urban centers and now in climate resiliency on working lands. A social worker in trade and by nature, Hannah works tirelessly to connect us

all to what we need, when we need it. Her current projects revolve around building cross-sectional business models that empower farmers/ranchers and place-based technical assistance providers to earn family-sustaining wages while building a climate-resilient food system. Hannah would love to get to know you and how you fit in – please reach out any time!

---

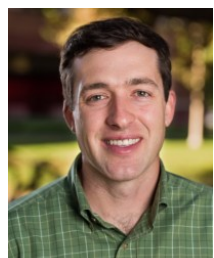


## Devii Rao

Devii Rao is a Livestock and Natural Resources Advisor with UC Cooperative Extension, serving San Benito, Monterey, and Santa Cruz counties. Her research and education primarily focus on targeted grazing, prescribed burning, the interaction

between grazing and wildfire, and weed management.

---



## Houston Wilson

Houston Wilson is both the Director of the UC Organic Agriculture Institute and Asst. Cooperative Extension Specialist in the Department of Entomology at UC Riverside. His work focuses on integrated pest management practices for orchards and vineyards. Recently, Dr. Wilson was also appointed Director of the newly

created UC Organic Agriculture Institute, where he facilitates the

development of research and extension programs for organic agriculture. While he is affiliated with UC Riverside, Houston's lab is based off-campus near Fresno at the UC Kearney Agricultural Research and Extension Center.

---



### Jaime Irwin

I started out in natural resource and science education, but and caught the Shepherd bug soon after I met my husband. Robert is a third-generation sheep man and together we started Kaos Sheep Outfit from scratch in 2011. We work with a great crew of herders and move thousands of sheep to various land bases primarily in Lake, Mendocino, Napa, Colusa, and Yolo counties. We graze vineyards, alfalfa, other crop residues, and range.

---



### Javier Zamora

Javier Zamora of JSM Organics farms organic fruit and vegetables in Monterey County. Javier has over ten years of experience farming and comes from a farming family in Mexico. He began farming in the U.S. on 1.5 acres with ALBA's farm incubator program. He now owns 200 acres, including 120 acres

under a conservation easement held by the Elkhorn Slough Foundation. Javier strives to farm in partnership with nature, utilizing healthy soil practices and thoughtfully using water and fertilizer in order to leave the soil better than he found it. He also works to support and mentor the next generation of farmers.

---



### Jeff Creque

Jeffrey Creque is a co-founder of the Marin Carbon Project ([www.marincarbonproject.org](http://www.marincarbonproject.org)) and Director of Rangeland and Agroecosystem Management at the Carbon Cycle Institute ([www.carboncycle.org](http://www.carboncycle.org)), where he

focuses on strategies to increase soil carbon for multiple ecosystem benefits. Jeff is currently engaged in working with Ranchers, Farmers, and Resource Conservation District personnel across California and the U.S. to increase carbon capture and sequestration on working lands within a whole-farm planning and implementation framework known as Carbon Farm Planning. He holds a Ph.D. in Rangeland Ecology and is a California State Board of Forestry Certified Rangeland Manager and USDA-NRCS certified Conservation Planner and Comprehensive Nutrient Management Planner. Jeff has over thirty-five years of hands-on experience in bio-intensive agriculture, rangeland management, watershed restoration, agroforestry, compost production, and utilization, and soil carbon enhancement.

---



### Jennifer Morales

Jennifer has been with the California Department of Water Resources since 2009 and leads the Agricultural Water Use Efficiency Unit. She spent 10 years with the DWR Climate Change Program where she focused on

agricultural sustainability under a changing climate.

---



### Jessica Chiartas

Jessica Chiartas is a Soil Biogeochemist investigating the long-term impacts of soil health management on productivity, profitability, and the provision of ecosystem services; across the diversity of California soils, climates, and cropping systems. Through participatory research

and multi-stakeholder engagement, she seeks to drive discovery around the context-specific implementation and assessment of soil health management systems. She has collaborated with scientists and statisticians at UC Berkeley to investigate spatial heterogeneity of soil carbon and appropriate use of statistics; served in the OpenTeam Field Methods Group to develop a harmonized soil health database; represented UC Davis in the California Farm Demonstration Network, participated in the ASA-CSA-SSSA Climate Task Force to inform the Biden administration on climate and agriculture, led the Measurement Workstream for a Google Food Lab Accelerator, and worked with multiple food brands, non-profits, and NGOs to develop effective monitoring, reporting, and verification (MRV) protocols.

---

### Jon Gustafson

Jon Gustafson started with NRCS in 1998 as a field office rangeland management specialist in Petaluma. Since then, he has served several roles for the agency in California including:

- State Rangeland Management Specialist
- State Rangeland Ecologist
- Acting State Soil Scientist
- State Continuity of Operations Coordinator

In addition to various non-technical jobs in the private sector, Mr. Gustafson's prior federal service included working in California for the National Park Service and the US Forest Service. With NRCS, Mr. Gustafson has delivered technical support work including:

- Developing NRCS state ranking criteria for the USDA Grassland Reserve Program
- Developing enhancement guide sheets for the USDA Conservation Security and Conservation Stewardship Programs
- Evaluating conservation effects of conservation practices
- Design contributions to the Ecosystem Dynamics Interpretive Tool
- Develop conservation planning tools for grazed lands
- Numerous technical training roles for NRCS conservation planners

Mr. Gustafson grew up mostly in California and currently lives in Davis.

---





## Kate Munden-Dixon

Kate Munden-Dixon is an applied social scientist and project manager with expertise in socio-ecological transitions and food system governance. For over 15 years she has developed and supported community-driven projects in the US, Honduras, and Thailand, that advance equitable and resilient food systems. She received her Ph.D. in Geography from the University of California, Davis, and a Master of Environmental Planning and Design from the University of Georgia. Kate currently leads the Agrifood Systems Program at the Institute for Ecological Civilization (EcoCiv). The Agrifood Systems Program uses its activities—research, facilitation, convenings, and consulting—to assist communities around the globe in achieving and maintaining climate-resilient food systems that are locally led yet supported by international best practices, resources, and knowledge.



## Kayla Unger

Kayla Unger serves as CDFA's Special Advisor for Climate, Water and Drought. Unger was previously an Assistant Cabinet Secretary in the Office of Governor Gavin Newsom and prior to that worked as Chief of Staff for SGR Consulting, a finance strategy and political consulting firm in San Francisco. She also served as a consultant on the Global Climate Action Summit in 2018. Unger is a graduate of UC Berkeley and received a Master of Public Policy and Public Administration degree from Northwestern University.



## Katie Baidon

Katie joined NOFA-NY in the summer of 2021 as a policy coordinator. Katie grew up in Central New York on a small livestock farm. She has been involved in many facets of food and farming including sales and marketing at a Finger Lakes winery, coordinating a nationwide community of practice focused on school meal

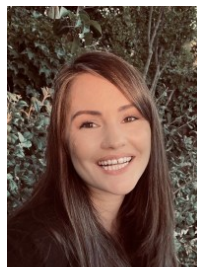
programming, and most recently as a communications specialist with Cornell Cooperative Extension. Prior to her time with Extension, she worked at the Charles H. Dyson School of Applied Economics and Management at Cornell University. Katie holds a master's degree in Public Administration from Cornell University, where she focused on environmental policy. She completed her bachelor's degree at Alfred University.



## Kevin Greer

Kevin Greer started his irrigation career moving sprinkler pipes in his grandpa's walnut orchard, moving up to foreman of his father's landscape company and installing residential irrigation systems. Since 2009 he has worked as a project manager for the RCD of Tehama County running their

Mobile Irrigation Lab Program focused on agricultural irrigation efficiency. In his 14 years of experience, he has evaluated nearly every kind of agricultural irrigation system common to California ranging from center pivots to drip lines. He has also covered a large portion of the North State, spanning 12 counties between Sacramento and the Oregon border, totaling 1,149 evaluations at just over 44,000 acres.



## Dr. Leslie Roche

Dr. Leslie Roche is an Associate Professor of Cooperative Extension with the UC Davis Department of Plant Sciences. She completed her Ph.D. at UC Davis and was a USDA-NIFA Postdoctoral Fellow in the Department of Plant Sciences before joining the faculty in 2015. Dr. Roche's research and extension program are at the intersection of agricultural, environmental, and social aspects of ranching and livestock production on California's rangelands. She works with diverse stakeholders to integrate management expertise and applied research to address key challenges on grazing lands, including managing multiple agricultural and ecological outcomes, as well as coping with and adapting to drought.



## Lilian Autler

Lilian Autler is a project manager and trainer at the Equitable Food Initiative (EFI), a nonprofit certification and skill-building organization that seeks to transform agriculture and improve the lives of farmworkers. She manages EFI's work to build the capacity of EFI-certified farms to reduce waste and GHG emissions and adopt climate-smart practices. As part of the workforce development team, Lilian trains labor-management leadership teams in workplace collaboration and problem-solving skills and supports ongoing learning and communication among workers, managers, growers, and EFI. Lilian has a background in urban planning, community development, and adult education in the US and Latin America.



## Lilian Thaoxaochay

Lilian is a first-generation Hmong American born and raised in Fresno, CA. Her family fled to the US in the late 1970s as refugees from the American Secret War in Laos. They settled in the Central Valley where they have farmed a multitude of crops for over 30 years. She has an MA in Cultural Anthropology from UC Santa Cruz and a BA in Medical Anthropology and Asian American Studies from Stanford University. Lilian joined the UCCE Fresno Small Farms team in 2021. She works on a variety of projects from specialty crop research to farmer education and outreach as well as providing technical assistance for emerging programs.

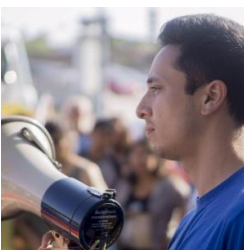


## Liz Carlisle

Liz Carlisle is an Assistant Professor in the Environmental Studies Program at UC Santa Barbara, where she teaches courses on food and farming. Born and raised in Montana, she got hooked on agriculture while working as an aide to an organic farmer and U.S. Senator Jon Tester, which led to a decade of research and writing collaborations with farmers in her home

state. She has written three books about regenerative farming and agroecology: *Lentil Underground* (2015), *Grain by Grain* (2019, with co-author Bob Quinn), and most recently, *Healing Grounds: Climate, Justice, and the Deep Roots of Regenerative Farming* (2022). She is also a frequent contributor to both academic journals and popular media outlets, focusing on food and farm policy, incentivizing soil health practices, and supporting new-entry farmers. Prior to her career as a writer and academic, she spent several years touring rural America as a country singer.

---



## Lucas Zucker

Lucas Zucker is the Policy and Communications Director at CAUSE. He graduated from UC Berkeley with a bachelor's degree in Political Economy. Lucas joined the CAUSE staff in 2012 as a youth organizer and researcher. At CAUSE he has worked on community organizing campaigns and policy

advocacy around voting rights, healthy food access, public transit, environmental justice, education, immigrants' rights, affordable housing, and workers' rights. Lucas serves on the board of PowerSwitch Action and California Calls, the Planning Commission of the City of Ventura, and the Community Advisory Committee for Clean Power Alliance.

---



## Lynne McBride

Lynne McBride is the Executive Director of the California Dairy Campaign (CDC), a grassroots organization of dairy farm families that work on a wide range of dairy policy issues, including climate-smart agriculture policies and programs and dairy pricing, and other farm policy

matters. CDC provides outreach and education to dairy producers on manure management practices and regulatory issues relating to air and water quality. CDC is a Dairy Cares member and a California Dairy Quality Assurance Program partner, working on a variety of dairy sustainability issues.

CDC is a member organization of the California Farmers Union (CFU), the California chapter of the National Farmers Union (NFU), representing over 200,000 farmers who are leading the nationwide effort among farmers to mitigate and adapt to the effects of climate change. Lynne began working for California Dairy Campaign in 2000 after serving as NFU Government Relations Representative in Washington, DC, focusing on environmental and farm policy issues.

---



## Majdi Abou Najm

Dr. Abou Najm is a faculty member at the Department of Land, Air, and Water Resources at the University of California Davis. He studies the dominant physical and biogeochemical processes controlling the flows of

water, carbon, energy, and nutrients across the soil-plant-atmosphere system and the impact of our decisions on sustainability. He seeks integrative approaches at the nexus between water, energy, and food to develop sustainable solutions that promote circular economic progress, social inclusion, and environmental sustainability.

---



## Matthew Botill

Matthew Botill is a Division Chief at the California Air Resources Board. Matthew is responsible for overseeing several of the state's climate programs, including the Scoping Plan, Cap-and-Trade Program, and the Low Carbon Fuel Standard.

Matthew also serves as the agency's policy lead for natural and working lands, including their relationship to carbon neutrality.

---



## Michael R. Dimock

Michael is a strategist, organizer, and advocate for food and farming systems change. He heads Roots of Change, a program of the Public Health Institute. Since 1996, Michael has been spawning education and facilitating community dialogues and creative engagements with government and corporate leaders to advance food and farm policies and practices that make agriculture and food enterprises solutions to critical

ecological, economic, and social challenges. Since 2006, his leadership has helped render several local policies, one new law, a funding program at the federal level, and three new California laws that include two new funding programs sustained by ROC's five successful budget requests. He has been a player in passing regenerative agriculture policies that provide farmers with incentives to deliver ecosystem services. He is the host of the podcast, *Flipping the Table*, featuring honest conversations about food, farming, and the future.

---



## Nataly Escobedo Garcia

Nataly is a Policy Coordinator – Water Programs based in the Coachella office. She was born in Mexicali and raised in Oxnard, CA. She has a BA from the University of California, Santa Cruz, in Latin American and Latine Studies, as well

as an MA in Anthropology from California State University – Los Angeles. She is currently studying Social Ecology at the University of California, Irvine, and expects to receive her Ph.D. in 2023. She is particularly interested in how issues in water law, water rights,



and water governance impact people of color, low-income people, and farmworker communities in California.

---

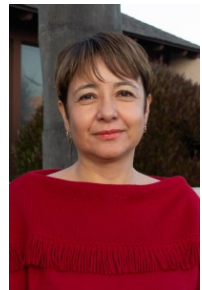


## Nathanael Gonzales Siemens

Grew up on a small farm in California's San Joaquin Valley and founded two businesses there with his family. Fat Uncle Farms is now run by his brother and is focused on food justice and sovereignty and Gonzales Siemens Family Farm, operated by his partner, strives to implement regenerative farming practices and to equip and

empower traditionally underrepresented groups. Nathanael is the manager of the Pacific Region of the Rodale Institute's Regenerative and Organic Agriculture Consulting Service. Rodale provides free agronomic advising, certification assistance, and wrap-around support for farmers across North America.

---



## Nayamin Martinez

Ms. Martinez is the director of the Central California Environmental Justice Network (CCEJN). Ms. Martinez has vast experience working with immigrants and residents of disadvantaged communities across the San Joaquin Valley managing public health and environmental justice programs, conducting participatory research, and launching the leadership and civic engagement programs.

Ms. Martinez serves in various advisory groups including the "Environmental Justice Advisory Group of the San Joaquin Valley Air Pollution Control District"; the "Community Stakeholders Advisory Committee" of the UCD Environmental Health Science Core Center and the Sustainability Pest Management work group. Ms. Martinez holds a master's degree in both Public Health and Sociology.

---



## Nina F. Ichikawa

Nina F. Ichikawa (she/her) is the Executive Director of the Berkeley Food Institute. She previously served in the office of US Senator Daniel K. Inouye and with the US Department of Agriculture's "Know Your Farmer,

Know Your Food" Initiative. She received a BA in Interdisciplinary Studies/Food Policy from UC Berkeley and a MA in International Relations/Food Policy from Meiji Gakuin University in Tokyo. She volunteers with the Sustainable Pest Management Workgroup and Saba Grocers.

---

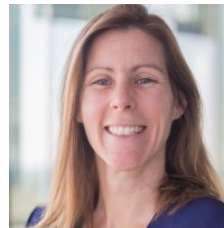


## Paul Danbom

My name is Paul Danbom I am a 5th generation farmer. I own and operate Brindeiro and Danbom Dairy Farms and D5 Family Farms along with my wife Taryn Danbom. I am a proud father of three children and an active

member of my community Hilmar and Turlock, Ca. I am extremely proud of the steps my farms have taken to become more environmentally progressive. As a family farmer, I believe in the quality of the land needs to be preserved for the next generation.

---



## Rebecca Ryals

Rebecca is an Associate Professor of Agroecology at the University of California, Merced. She studies how nutrients and carbon cycle in agroecosystems, and how the management of these cycles contributes to climate change mitigation and

resiliency. A major research theme in her lab is the capture, transformation, and beneficial reuse of organic wastes as resources to rebuild soil carbon and contribute to a more productive and just food system. Her research program focuses on ecosystem-based climate solutions, particularly in agricultural and sanitation contexts.

---



## Roxanne Hulme Foss

Ms. Foss is a senior ecologist with a robust understanding of applying ecological principles to adaptive land management. Ms. Foss received her B.S. in Conservation and Resource Studies with a minor in Forestry; M.S. in Range

Management; and Graduate Certificate in Geospatial Information, Science, and Technology from the University of California, Berkeley. Ms. Foss's key research interests involve the intersection of grazing management and vegetation in the coastal, central valley, and the Sierra Nevada working landscapes. She has developed predictive models for native grassland distribution at Point Reyes National Seashore, studied grazing impacts on riparian habitats on Mount Diablo, modeled rare plant population dynamics at Golden Gate National Recreation Area, and developed a statewide study on the impact of biomass levels on fire behavior.

---



## Sacha Lozano

Sacha Lozano has been part of the Santa Cruz RCD since 2011, playing a variety of roles within the agriculture and conservation team. Some of his accomplishments with the RCD include: Fostering

relationships and breaking barriers to provide technical assistance and outreach to growers (in English and Spanish), focusing on soil



erosion control, irrigation and nutrient management, soil health, and water quality protection in agricultural lands; assisting economic valuation of ecosystem services and aquifer recharge suitability mapping; developing incentives for environmental conservation and stewardship, and supporting grower participation in State-funded climate-smart ag programs and carbon farming planning.

---



### Samuel Sandoval

Samuel Sandoval is a professor and extension specialist in water resources at UC Davis – UC ANR, and a collaborator with the California Institute for Water Resources. He is a water resources scientist interested in improving water management for human and environmental needs in California, considering the economic,

environmental, and social justice aspects for long-term sustainable strategies. He works with a wide range of people, from farmworkers delivering training on how to prevent contamination of water due to pesticide applications (in English and Spanish), to water resources managers and decision makers developing basic research to determine environmental flows. He is the co-host of the Water Talk Podcast and the founding member of the Water Management Lab. He is the academic advisor for the Water Education for Latino leaders non-profit organization.

---



### Sandra Nakagawa

Prior to joining the CalCAN team, Sandra served for five years in various staff positions in the California legislature, working on housing, climate, and equity-based state legislation as the senior consultant in the Assembly Housing and Community Development Committee, in the office of

Assemblymember Mark Stone, on the Assembly Judiciary Committee, and in the Senate Office of Research. She earned undergraduate degrees from UC Berkeley in English and Sociology, with a music minor, and her Ph.D. in Sociology from Stanford University. She has over a decade of experience conducting interdisciplinary research on health and environmental disparities and has expertise in and a commitment to science-driven policy. Sandra comes from a long line of farmers, and she grew up in Sonoma County on the former chicken farm of her grandparents.

---



### Sarah Keiser

Sarah is a community organizer and grazing advocate, combining grazing ruminants and her experience to do regenerative land stewardship & vegetation management in Sonoma County,

CA. She created the Penngrove Grazing Project, a community-based, sustainable, land-stewardship concept working to improve the health and aesthetics of the land while increasing atmospheric

carbon sequestration into the soil. There are now 12 grazing co-operatives in neighborhoods around Sonoma County. These grazing cooperatives create and enhance community connection in a very personal manner and facilitate the stewarding of these neighborhoods back to healthy fire ecosystems. Sarah brings neighbors, fire marshals, indigenous fire ecologists, arborists, and media together to develop strong community alliances for fire safety and to practice regenerative land stewardship.

---



### Shanna Atherton-Bauer

Shanna Atherton-Bauer is a senior environmental planner and lover of California's open spaces. She has spent the last seven years working to protect California's agricultural lands for climate, food security, and other benefits. More recently, she led the development of the Department of Conservation's Multi-

Benefit Land Repurposing Program, which helps regions plan for, develop, and implement agricultural land repurposing projects to improve groundwater sustainability in a way that reduces impacts to the agricultural economy while providing benefits to nearby communities.

---



### Steve Fukagawa

Steve is a third-generation farmer from Kingsburg, California. He grew up on the Fukagawa family farm with his older sister and twin brother. Steve has always loved working with his dad on the farm.

---



### Tania Zuñiga Moreno

As a Farm Business Advisor at Kitchen Table Advisors, Tania Zuñiga has spent the past three years directly supporting small sustainable farmers and ranchers in the Central Coast region. With an extensive background in agronomy and business management and training in social project management, Tania has assisted her clients to adopt regenerative agriculture practices, accessing financial resources, and connecting

with technical assistance from partners. She was introduced to small-scale agriculture through internships throughout North and South America, including at ALBA in the Salinas Valley, Pennsylvania, Cuba, and Peru, later managing a medium-scale plant nursery before eventually working as a project manager – all of which brought her to KTA. Prior to her position as a Business Advisor, Tania worked on youth programs at the Lima mayor's office and as well as advocated for gender equality through other non-profit work.

---



## Thea Maria Carlson

Thea Maria Carlson is an earth steward, farmer, facilitator, community weaver, and speaker who collaborates with organizations, individuals, and communities at the intersections of food and agriculture,

environmental stewardship, equity, and justice. She works with Agrarian Trust as a co-facilitator and developer of the Commons Alliance, building a network of organizations, land stewards, service providers, and community members dedicated to collective and community-based approaches to land justice, ownership, access, tenure, and stewardship. Thea teaches and co-leads student internships in the Wildfire Resilience Program at Santa Rosa Junior College, and is a 2023 Fire Forward Fellow and active member of the Good Fire Alliance. Thea is on the leadership circle of Celebrating Womxn's Leadership in Food and a trustee of Dirt: The Foundation for the Regeneration of Earth. Thea lives and tends land at Monan's Rill, an intergenerational intentional community within the ancestral territory of the indigenous Wappo people.

---



## Tim Bowles

Tim Bowles is an Assistant Professor of Agroecology and Sustainable Agricultural Systems in the Department of Environmental, Science, Policy, and Management at UC Berkeley. The primary question motivating his research is: How can reliance on biodiversity and ecological

processes create productive, resilient, and healthy agricultural systems? His lab's research focuses on carbon, nitrogen, and water dynamics and plant-microbe interactions in agricultural systems and how systems management can improve soil-based ecosystem services. This work draws on approaches from agroecology, biogeochemistry, and microbial ecology with support from USDA, NSF, CDFA, WSARE, and other programs. Through extensive collaboration with researchers in social science, policy, and economics, as well as extension and advocacy organizations, his lab also examines and addresses the barriers and opportunities for transitioning to agroecologically based production systems. He currently serves as the co-associate director of the Berkeley Food Institute.

---



## Toby O'Geen

My research program is diverse but attempts to focus on one central theme, the application of soil-landscape relationships to address issues related to agricultural productivity, environmental quality, and natural resource management. Current areas of research include 1) repackaging soil surveys to delineate soil health management units; 2) assessment of soil ecosystem services in rangelands and forests; 3) creating

decision support tools for land management; and, 4) new soil survey delivery mechanisms (apps) for the public. I teach two classes at UC Davis, Soils in Land Use and the Environment, and a summer field class that tours California describing soil profiles.

---