

Farmer & Rancher Climate Leaders

Sustainable Agricultural Lands Conservation Program Participants

The Sustainable Agricultural Lands Conservation Program (SALCP), administered by the Department of Conservation (DOC), funds agricultural conservation easements and strategic planning grants for local governments to protect farm and ranch land at risk of development as a strategy to avoid future greenhouse gas emissions associated with transportation and urban development. More info is available on DOC's website: <http://www.conservation.ca.gov/dlrp/SALCP/Pages/Index.aspx>

SONOMA COUNTY AG + OPEN SPACE

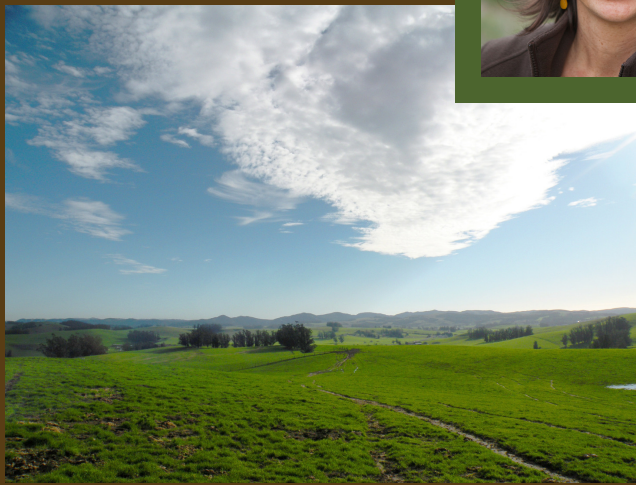
Sonoma County
Award Amount: \$1,750,000
1,100 Acres Protected



“The combination of land prices and the pressure to develop in Sonoma County makes it difficult for farming families to stay in agriculture. SALCP is critical for leveraging funds to protect our working lands while also reducing carbon emissions.”

- Misti Arias
Acquisition Program Manager

Two SALCP grants were awarded to Ag + Open Space, formerly the Sonoma County Agricultural Preservation & Open Space District, to protect 1,100 acres on two organic dairy farms. The region's rolling grasslands, soil types and climate are ideal for grazing and have supported ranches and dairies for decades. The two dairies are located on roads identified as scenic corridors and their protection will help maintain the county's rural character. Further, both properties are owned by multi-generational farm families whose children intend to stay in agriculture. These families have a strong connection to the land and see the easements as a way to remain economically viable and leave a legacy.



The California Climate & Agriculture Network (CalCAN) is a statewide coalition that advances state and federal policy to realize the powerful climate solutions offered by sustainable and organic agriculture.



CalCAN
CALIFORNIA CLIMATE &
AGRICULTURE NETWORK